



# SHUBHAM

Your Legacy Awaits





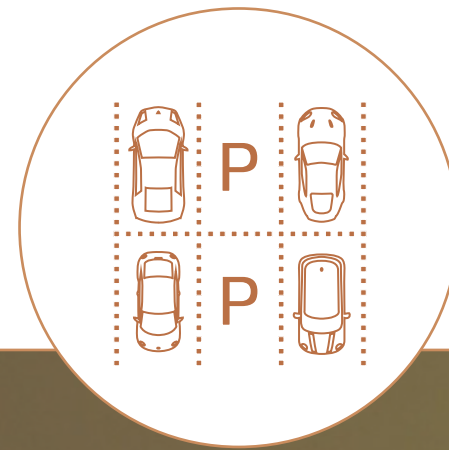
# ABOUT US

Shubham signifies luck and the auspicious beginning of new traditions. It celebrates the values that have been passed down through generations and embodies the respect that stays true to family ties.

The project features 2.5 and 3.5 BHK apartments, ideal for any family size. With 154 units, Shubham is a prime community property and has an abundance of parking and security facilities. It is a suitable choice for anyone who appreciates being surrounded by history, culture and traditional values.







**Located in the heart  
of South Mumbai**

**Expansive & panoramic  
views of Marine drive**

**Abundance  
of parking**

**Well connected to  
business, educational  
and healthcare  
infrastructure**





## LOCATION

Shubham is located near Malabar Hill, in the well-connected area of Prarthana Samaj, Girgaon. Shubham consists of 1.3 acres of land and is within walking distance of the upcoming Mumbai Metro, schools and premium healthcare facilities. This location is rich in heritage and history, making it the ideal choice for South Mumbai living.







A SPACIOUS & WELCOMING RECEPTION

Artist's Impression



TERRACE SEAMLESSLY MERGES INDOOR AND OUTDOOR SPACES

Artist's Impression



MODERN AND INVITING BANQUET WITH A WARM ATMOSPHERE

Artist's Impression



BEAUTIFUL ROOFTOP SEATING AREA WITH GREAT SPATIAL LAYOUT

Artist's Impression





NEUTRAL COLORS AND NATURAL LIGHT IN LIVING ROOM



COZY STUDY AREA



MODERN KITCHEN WITH SIMPLISTIC ACCENTS AND TILES





MASTER BATHROOM WITH NEUTRAL ACCENTS



MASTER BEDROOM WITH A SOOTHING PALETTE



BEDROOM WITH AMPLE NATURAL LIGHT



MARBLE AND PASTEL TONED BATHROOM



# TEAM



Rohan Lifescapes is one of the pioneers in the redevelopment of tenanted buildings. Founded in 1996 by Mr. Harresh Mehta, Rohan Lifescapes has grown to become one of the largest landowners in South Mumbai.



SILA is a fast-growing real estate platform, with over 16,000 employees and 500,000 sq. ft. of area under development in the Mumbai Metropolitan Region (over INR 1500cr Gross Development Value of projects). The company was founded by brothers Sahil and Rushabh Vora, who were featured in Entrepreneur India magazine's '35 under 35' list in 2018.



# PLANS

## Shubham



Shubham seamlessly blends modern design elements between the exterior and interior of its apartments, ensuring each living space is tailored to meet contemporary lifestyle needs.

### 2.5BHK

Shubham's apartments offer an ideal spatial layout for contemporary living, with 2 bedrooms, 3 toilets, a spacious hall, a kitchen, and a flexible room for various purposes. Families who value privacy and love entertaining will enjoy the ample space.

### 3.5BHK

Shubham's 3.5 BHK apartments are spacious and practical for families, with a large living room, kitchen, 3 bedrooms, 4 bathrooms, a balcony, and an extra space for a study or prayer room. These apartments offer the flexibility and comfort needed for work, relaxation, and entertainment.



*“A home without culture is like a book without a story”*





## 2.5BHK

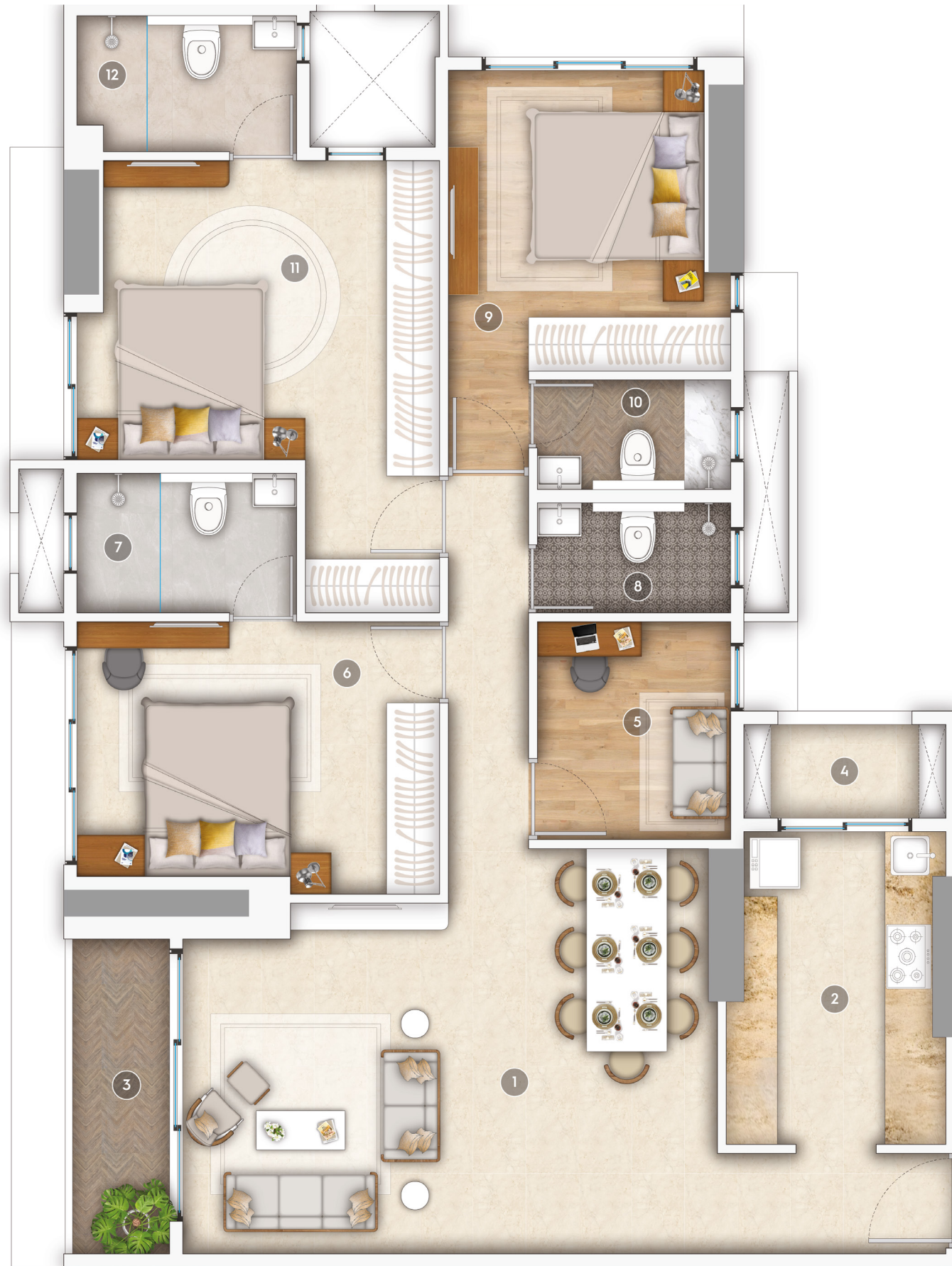
### 2.5BHK

### DIMENSIONS

1. Living Dining Area	12' 1" x 20' 4"
2. Kitchen	8' 0" x 10' 2"
3. Dry Balcony	6' 10" x 3' 0"
4. Study	8' 0" x 6' 6"
5. Powder Room	4' 8" x 4' 0"
6. Master Bedroom	14' 0" x 10' 6"
7. Master Bedroom Toilet	4' 0" x 8' 0"
8. Bedroom - 2	10' 0" x 10' 8"
9. Toilet - 2	6' 8" x 4' 0"

A. RERA Usable Area	867 Sq. Ft.
B. Exclusive Area	23 Sq. Ft.
C. Total Area	890 Sq. Ft.





## 3.5BHK

### 3.5BHK

### DIMENSIONS

1. Living Dining Area	19' 11" x 12' 11"
2. Kitchen	7' 4" x 11' 6"
3. Living Balcony	3' 11" x 11' 7"
4. Dry Balcony	7' 6" x 3' 5"
5. Study	7' 2" x 8' 0"
6. Bedroom - 3	13' 6" x 9' 4"
7. Toilet - 3	8' 2" x 5' 1"
8. Powder Room	7' 2" x 4' 0"
9. Bedroom - 2	9' 6" x 11' 0"
10. Toilet - 2	7' 2" x 4' 0"
11. Master Bedroom	12' 6" x 11' 0"
12. Master Bedroom Toilet	8' 2" x 5' 0"

A. RERA Usable Area	1,144 Sq. Ft.
B. Exclusive Area	70 Sq. Ft.
C. Total Area	1,214 Sq. Ft.





# AMENITIES

Shubham perfectly combines culture and convenience to enhance your modern living experience.



Abundant Parking



Lifestyle Terrace



Gymnasium



Recreational Garden



Banquet Hall

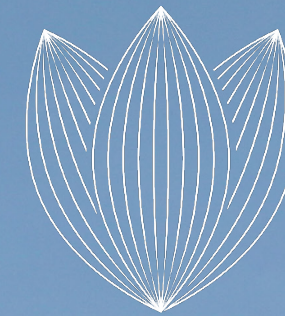


Help Desk



24/7 Maintenance Support





# SHUBHAM

Your Legacy Awaits

[sales@silagroup.co.in](mailto:sales@silagroup.co.in)  
(+91) 82911 55068  
[www.shubham.com](http://www.shubham.com)

MahaRERA registration no, RERA no. P520000220655